

# Downloading Configuration and Software File for Extrema DX

## Tools required:

- Internet Connection.
- Internet Explorer.
- Thumbdrive (64 MB)

## Step 1:

Insert thumbdrive into PC USB Port and ensure the thumb drive is recognized by opening My Computer icon on the desktop. The thumbdrive should be displayed as a new partition as shown in screenshot below.

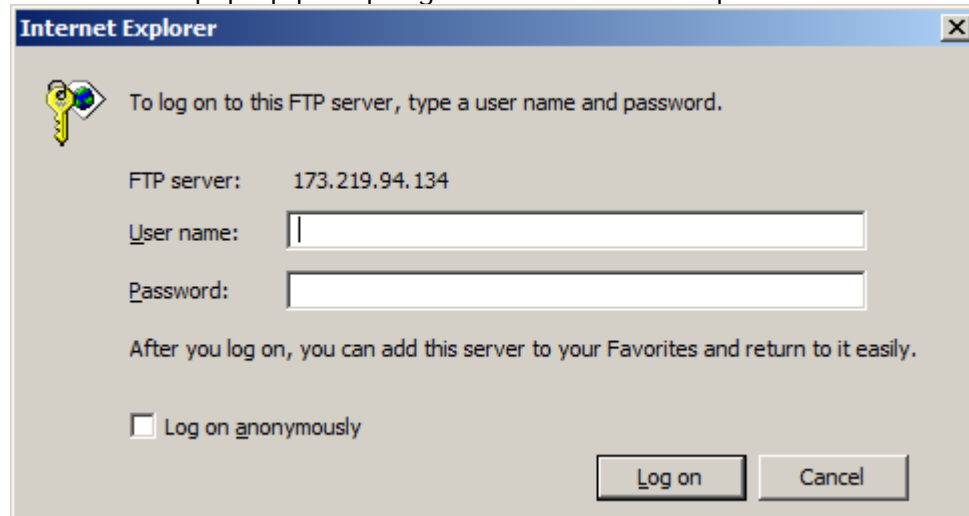
## Step 2:

Open up Internet Explorer.

## Step 3:

Type into the address bar: ftp://173.219.94.134

A Box should pop up prompting for a username and password like this:



**Username = ftpdx**

**Password = shOwtime** (Note: 0 is zero, not capital O)

Enter the username and password into the appropriate boxes and click "Log On".

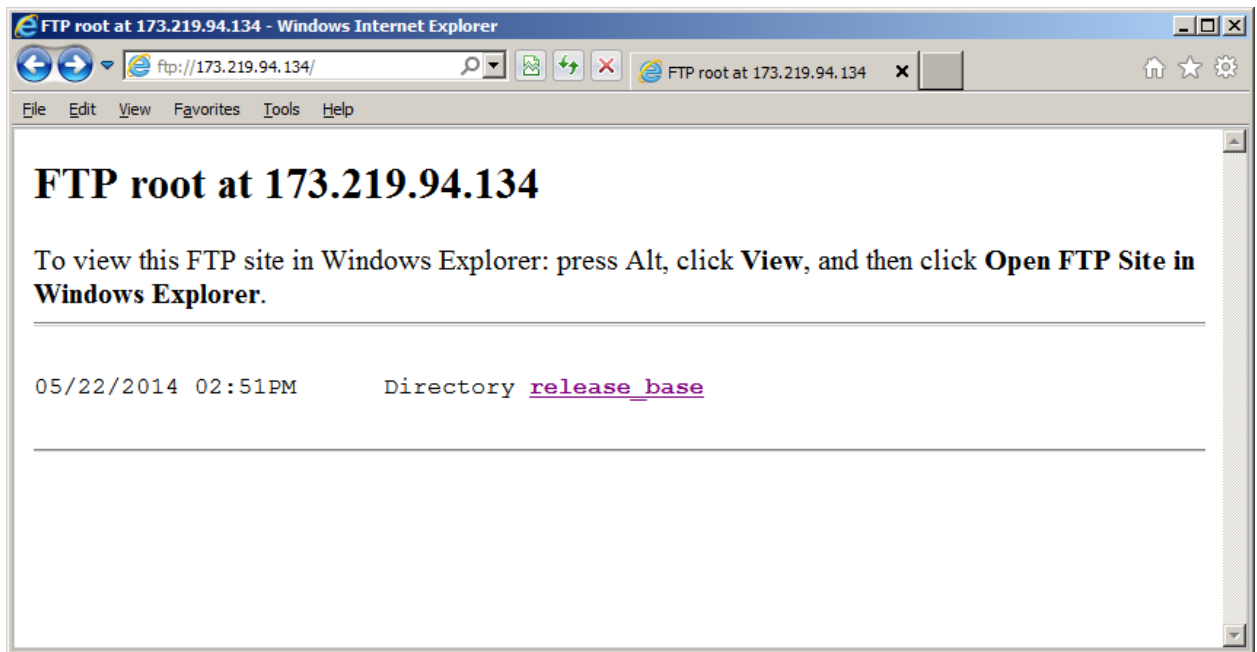
The following screen will be displayed:

## Step 4:

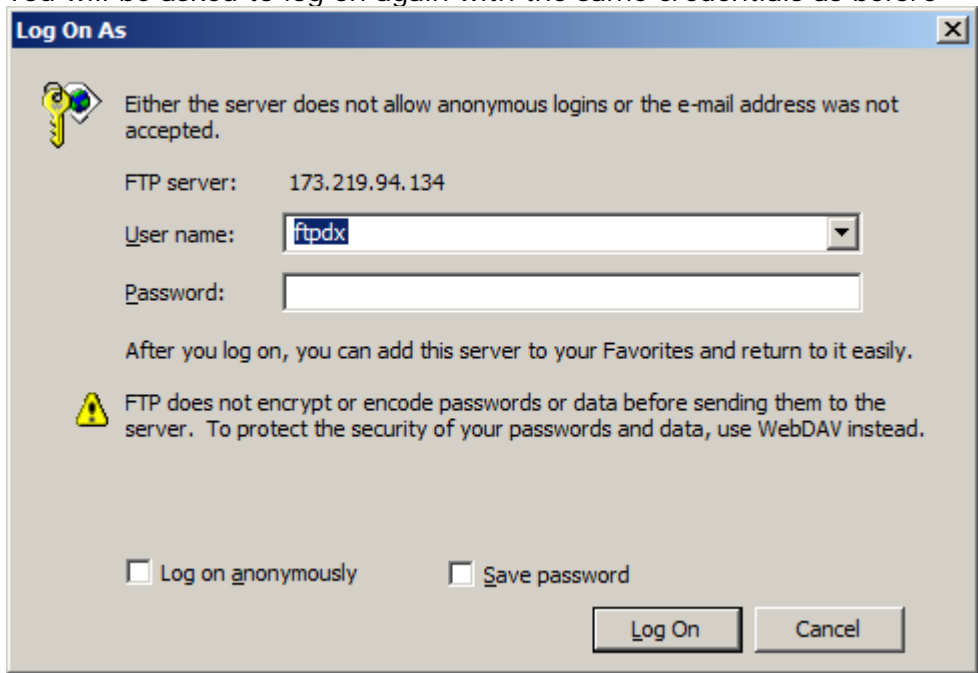
Downloading files

To view this FTP site in Windows Explorer press **ALT**, then click **VIEW** at the top of the screen .... After clicking **VIEW**, click on "**Open FTP Site in Windows Explorer**"





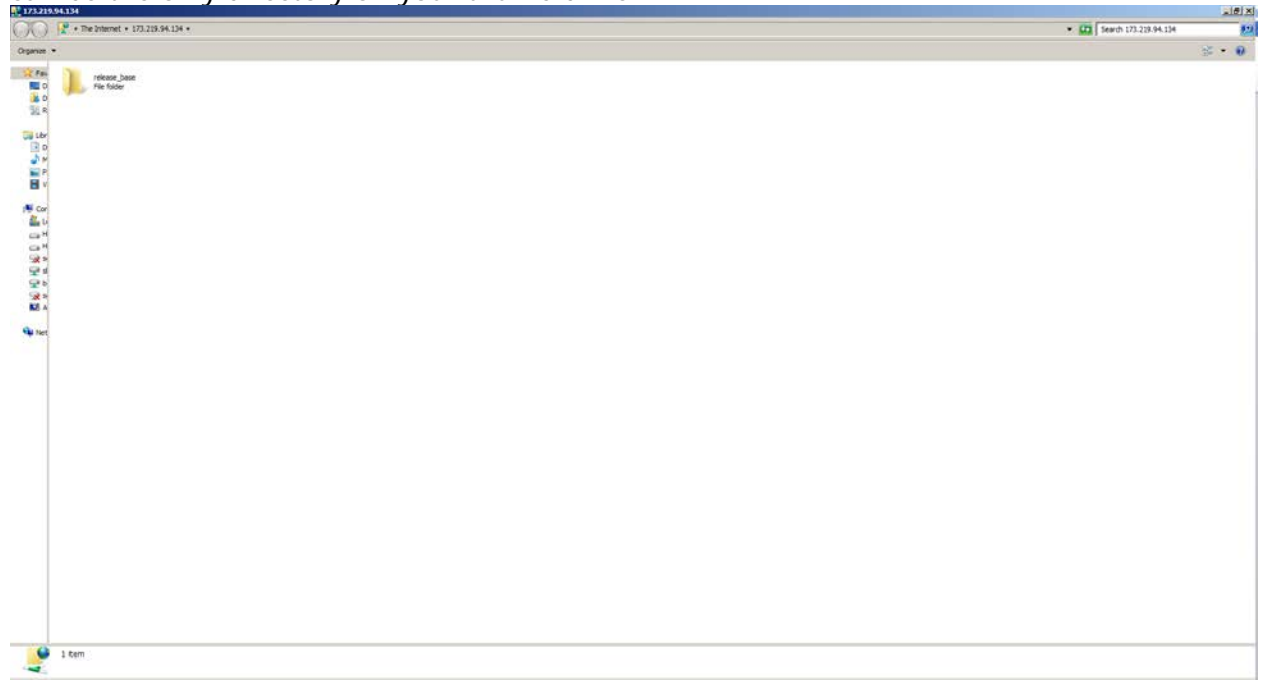
You will be asked to log on again with the same credentials as before



**Username = ftpdx**

**Password = sh0wtime** (Note: 0 is zero, not capital O)

Copy and paste the **release\_base** directory onto your "empty" thumb drive.....please keep in mind this can be the only directory on your thumb drive

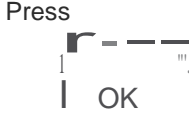

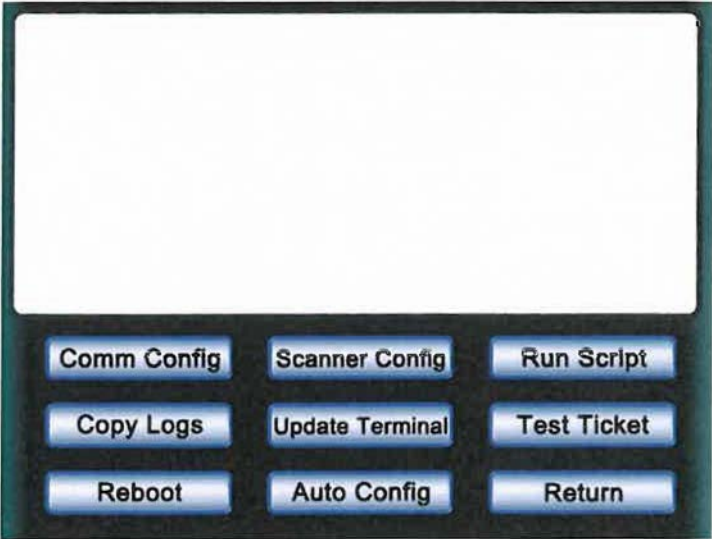



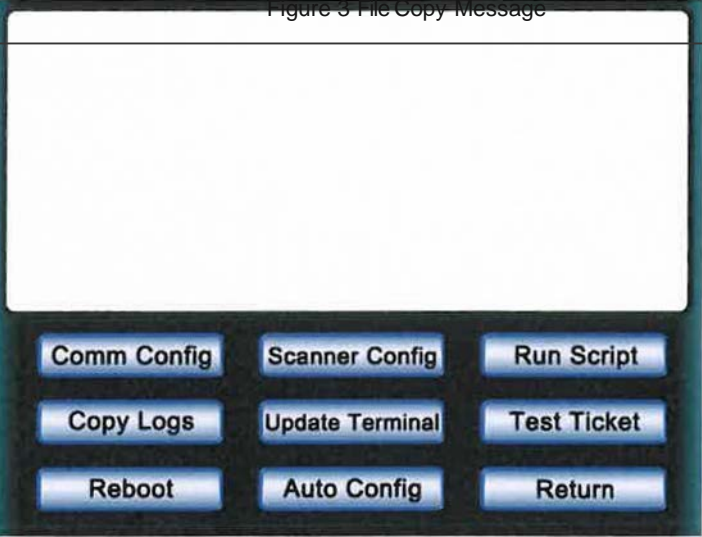

## WVL - DX Thumb Drive Upgrade Procedure

Owner: SGI-Video Production Support

Version: 1.0

Scope: The purpose of this document is to provide step-by-step procedure for upgrading software on DX Terminal with the use of a thumb drive. This procedure assumes a thumb drive have been provided and setup properly with the new DX Software installation package.

<p>Using the onscreen keyboard Enter Password: "123456"</p> <p>Press</p> 	 <p>Figure 1 Enter Password Keypad</p>
<p>2 From the Diagnostics screen</p> <p>Select</p> <hr/> <p>Update Terminal</p>	 <p>Figure 2 Diagnostics Screen</p>

<p>3</p>	<p>The message as shown in figure will display</p> <p>Select _____</p> <p>OK</p>	 <p>Figure 3 File Copy Message</p>
<p>4</p>	<p>Note: Remove the thumb drive prior to performing a reboot.</p> <p>From the Diagnostics screen, select</p> <p><b>Reboot</b></p>	 <p>Figure 4 Diagnostics Screen</p>
<p>5</p>	<p>The screen as shown in figure is displayed</p> <p>Select _____</p> <p>YES</p>	 <p>Figure 5 Reboot Confirmation Message</p>

